

# Bee Campus USA - College of Lake County

Report on 2020

## Pollinator Habitat Creation & Enhancement

CLC has its apiary located just to the north of the Horticulture Building and Campus Farm. It is located on the edge of a prairie and wetland that are being stewarded by the college. The Campus Farm hosts vegetables, flowers and herbs. The Campus Farm is managed by staff and student workers. In fall 2020, the horticulture program hosted a controlled burn of the 15 acre wetland. This burn will help with our efforts to remove invasives and to restore a healthy mix of native wetland plants. About 17 volunteers and staff participated in this controlled burn.



Students and staff with prescribed burn of wetland near the apiary



## Education & Outreach

The College of Lake County Apiary remained "busy-as-a-bee" throughout 2020. Multiple student-lead experiments and visitations were conducted both in the classroom and on the field. Students were invited to partake in a hive building project in an attempt to reduce colony-related illnesses. A multitude of active hives of different designs could be found on display in the apiary. Students exercised many treatment methods and hive management techniques in order to decrease the overall mortality rate. The apiary also hosted a variety of pollinator-related classes during the 2020 summer and fall semesters. On Wednesday, August 5th, Awareness of our native bees Protecting our Pollinators was taught by CLC's most experienced beekeeper, Edward Popelka. In efforts to raise awareness of the Rusty Patched Bumble Bee being added to the endangered species list highlighting what we can do to help We also spread awareness during a guided tour with the Waukegan Garden club as they visited the apiary in autumn with approximately one dozen attendees.

---

## Courses & Continuing Education

Pollinator related information is covered in Horticulture, Agriculture, and four Biology classes.

---

## Service-Learning

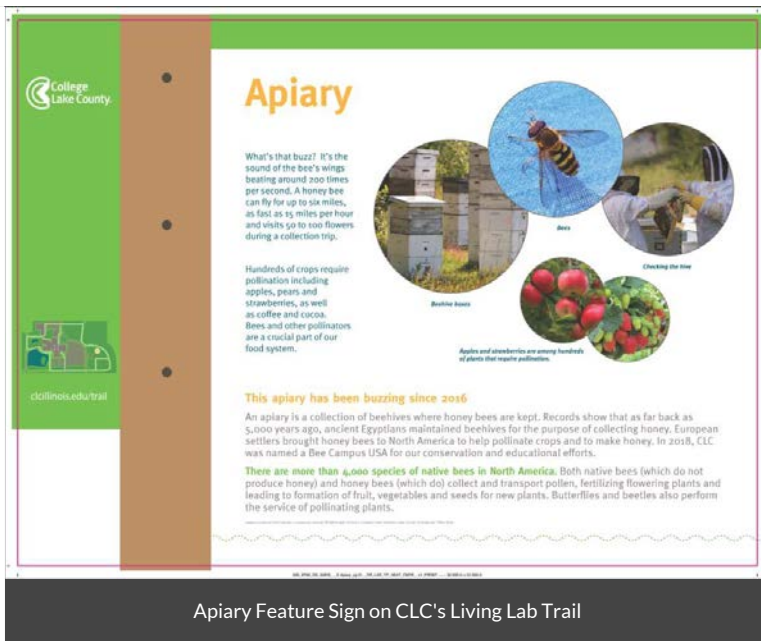
2 volunteers worked in the apiary last year, with one staying for the entire year, maintaining the hives. 2 class labs came out to the apiary for hive-building. 10 students participated in the controlled burn to provide improved habitat.

---

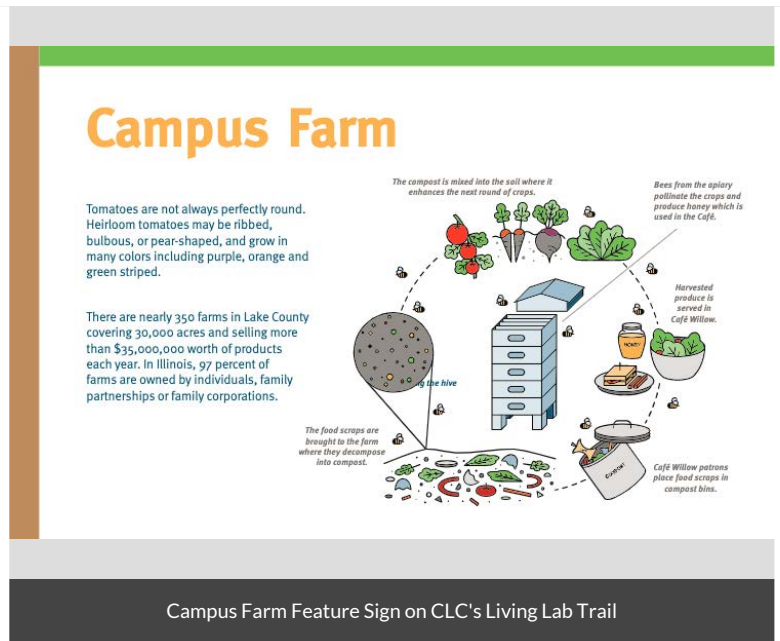
## Educational Signage

CLC hosts 39 interpretative signage across the campus with its Living Lab Trail. One feature sign provides information about the campus apiary and explains about the value of honey bees and other pollinators for our food supply. Signs highlighting natural areas such as the prairie and wetlands and those at the campus farm also reference the benefits of pollinators.





Apiary Feature Sign on CLC's Living Lab Trail



Campus Farm Feature Sign on CLC's Living Lab Trail

## Policies & Practices

CLC has a total of 105 acres of turf grass and 66 acres combined of wetlands, prairie, and woodland natural areas. The College of Lake County has been working to reduce its applications of fertilizers and pesticides, in accordance with its Integrated Pest Management Plan, contained within the Landscape Management Plan. In the past 10 years, CLC has reduced lawn chemical applications, from 4 regular applications a year to only as needed and mostly just in higher visibility locations. Herbicides and fertilizers have been eliminated from turf areas around the Horticulture Building, including the arboretum. The Campus Farm is managed organically without any synthetic fertilizers or pesticides. The Arboretum is adjacent to the farm and is managed without pesticides.

### Integrated Pest Management Plan:

### Recommended Native Plant List:

Recommended Native Plant Supplier List: [Land mgmt & Native Plant Suppliers.docx](#)

## Learn More



