

Bee City USA - Madison

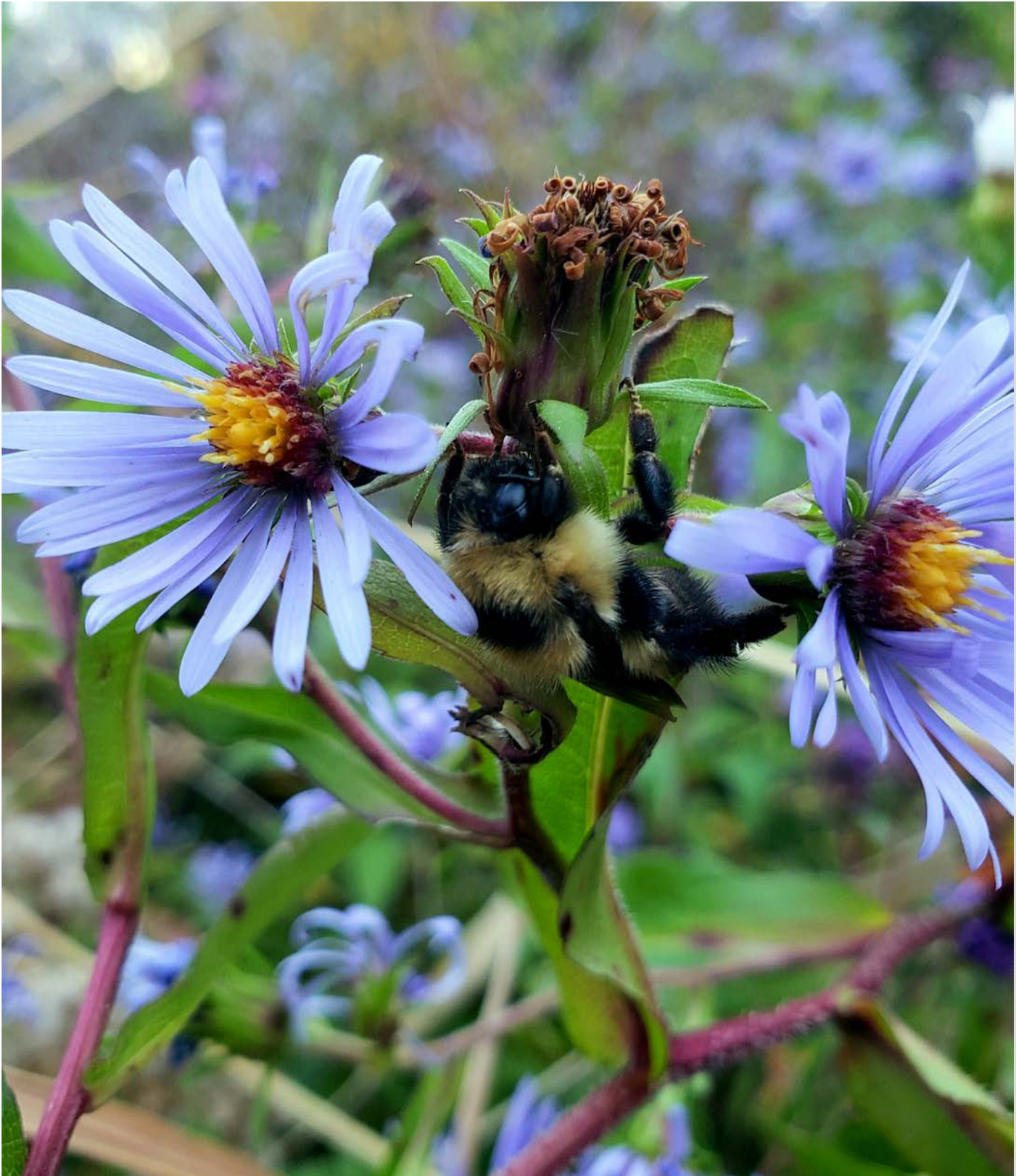
Report on 2020



Pollinator Habitat Creation & Enhancement

1.) A resident whose property was being bought by the City because of chronic flooding had established a pollinator planting on site. City Employees agreed to maintain and enhance the planting. In 2020 City staff spent 40+ hours weeding, transplanting plants that would be destroyed during demolition of the house, harvesting native seed and sowing native seed. 2.) Volunteers removed buckthorn, garlic mustard, burdock, invasive thistles and other weeds on a 5 acre wooded greenway. City employees sowed native woodland mix across 0.5 acres of the project area in late fall 2020. 3.) City Parks Dept turned 1500 sf of an old pea gravel playground pit into a pollinator planting with 800 plugs and 22 native species.





Education & Outreach

City of Madison staff, in collaboration with Dane Co, presented a four hour rain garden workshop with a focus on native plants. The workshop is affiliated with Dane Co's native plant sale and offers incentives to workshop participants.



Dane Co Stormwater Engineer Theresa Nelson presents on rain garden siting and installation at the collaborative rain garden workshop in February 2020



Policies & Practices

We are currently reviewing our Pest Management Policy to create an IPM focused policy. A task force, begun in 2019, was on hiatus in 2020, but will return again in 2021.

Integrated Pest Management Plan: [PesticidePolicyOnCityProperty.pdf](#)

Recommended Native Plant List:

<https://www.cityofmadison.com/engineering/stormwater/programs-initiatives/rain-gardens/rain-garden-plant-list>

Recommended Native Plant Supplier List:

Learn More

