

Bee Campus USA - Raritan Valley Community College

Report on 2021

Pollinator Habitat Creation & Enhancement

The Campus Cares volunteer planting program was up and running again in 2021. Approximately 25 volunteers planted native pollinator plants in planters in the Enabling Garden, Science courtyard, and in front of the main entrance, Theater, Student Center, Food Pantry, and Workforce Development building. The College also had native pollinator plants, shrubs, trees, and grasses planted in the Atrium and by the Events Center. An American Holly tree was planted by the Childcare Center's butterfly garden. Four native oaks were planted along the main roadway. Students planted native trees on and off campus.



Volunteers planting a garden by the main entrance



Volunteers planting self-watering planters by the Workforce Development building



Volunteers and members of the RVCC Bee Campus USA committee planting self-watering planters in the Science courtyard

Education & Outreach

In February, the RVCC Bee Campus USA Committee hosted a webinar on "Pollinators and Butterfly Gardens," in which Watershed Institute Educator Alison Novobilsky, Stormwater Specialist Kory Kresieder, and Stewardship Coordinator



Allison Jackson presented about the importance of pollinator gardens. They explained how to identify pollinators through examples of their work on propagated native plants in their restoration sites on the Watershed Reserve and how to distinguish between native plants and cultivars. They also explained what actions we can take to attract pollinators to our gardens and how best to help them in their plight with habitat loss. In October, Environmental Sustainability Intern Griffen Hurt led a local butterfly walk for 18 members of the public.



Butterfly walk attendees



New mini pollinator garden planted outside the RVCC Food Pantry

Courses & Continuing Education

In fall 2021, for the first time, the Ecology class ran a butterfly lab at a series of meadows in Readington. Students counted butterflies in fields of different sizes and identified them to species. The students learned how to use the data to create regressions that can be used to predict the number of butterflies that could be expected to inhabit fields of different sizes, possibly in a restoration application/context. Each fall and spring semester ENVI 102 (Environmental Science and Sustainability) students learn about the benefits of rain gardens for stormwater mitigation as well as providing habitat for pollinators and wildlife. The students are trained in rain garden maintenance and perform several hours of maintenance in rain gardens on campus and in the local community. Maintenance activities involve removing invasive species so that perennial native wildflowers are able to persist and attract pollinators. The Botany and Ecology courses also cover material on pollinator plants, including landscape ecology and modern environmental problems, plant ecology, and conservation. The Plants, Humans & the Environment course covers the effects of human activities on plants and the environment. These are all for-credit courses.





Ecology students measuring butterflies in RVCC's new tropical butterfly collection (in the boxes)

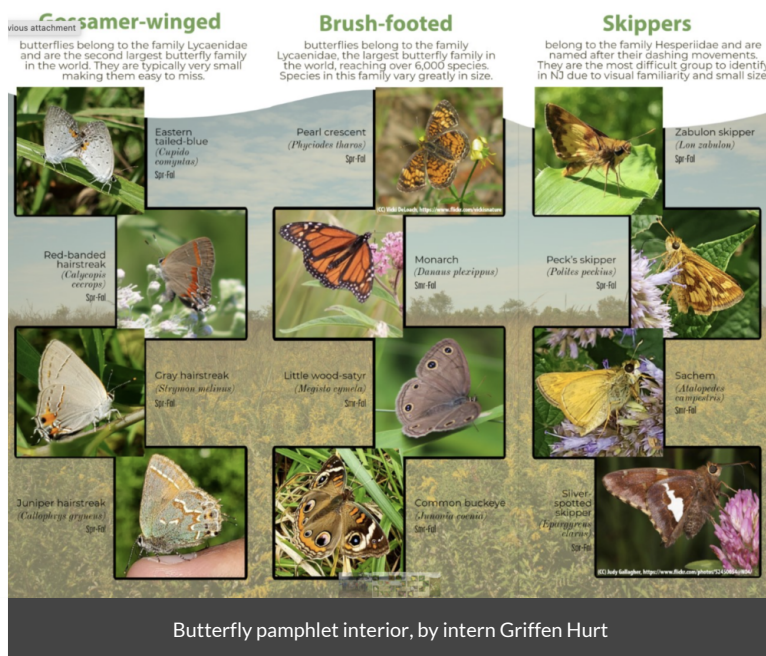
Service-Learning

Each fall and spring semester ENVI 102 students learn about the benefits of rain gardens for stormwater mitigation as well as providing habitat for pollinators and wildlife. Typically, the students are trained in rain garden maintenance and perform several hours of maintenance in rain gardens on campus and in the local community. Maintenance activities involve removing invasive species so that perennial native wildflowers are able to persist and attract pollinators. Due to covid, in 2021 students worked only in the campus rain garden and only in the fall semester.

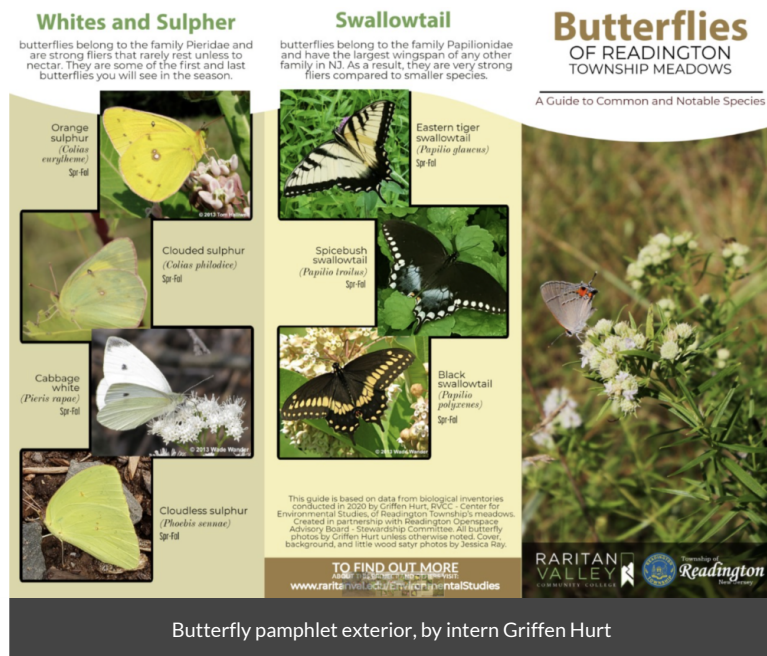


Educational Signage

Environmental Sustainability Intern Griffen Hurt developed a tri-fold butterfly pamphlet with information about the butterflies that the Ecology class observed in the Readington meadows.



Butterfly pamphlet interior, by intern Griffen Hurt



Butterfly pamphlet exterior, by intern Griffen Hurt

Policies & Practices

Pesticides are only used for pests that are endangering people (eg, wasp nests by buildings), for aggressive invasive plant species (eg, Ailanthus), and for weeds impacting athletes in the athletic fields (eg, baseball field warning track).

Integrated Pest Management Plan: [ipm_plan.pdf](#)

Recommended Native Plant List:

https://www.raritanval.edu/sites/default/files/aa_PDF%20Files/8.x%20General%20Information/RVCC%20Native%20Pollinator%20Plant%20List.pdf

Recommended Native Plant Supplier List:



[Learn More](#)

